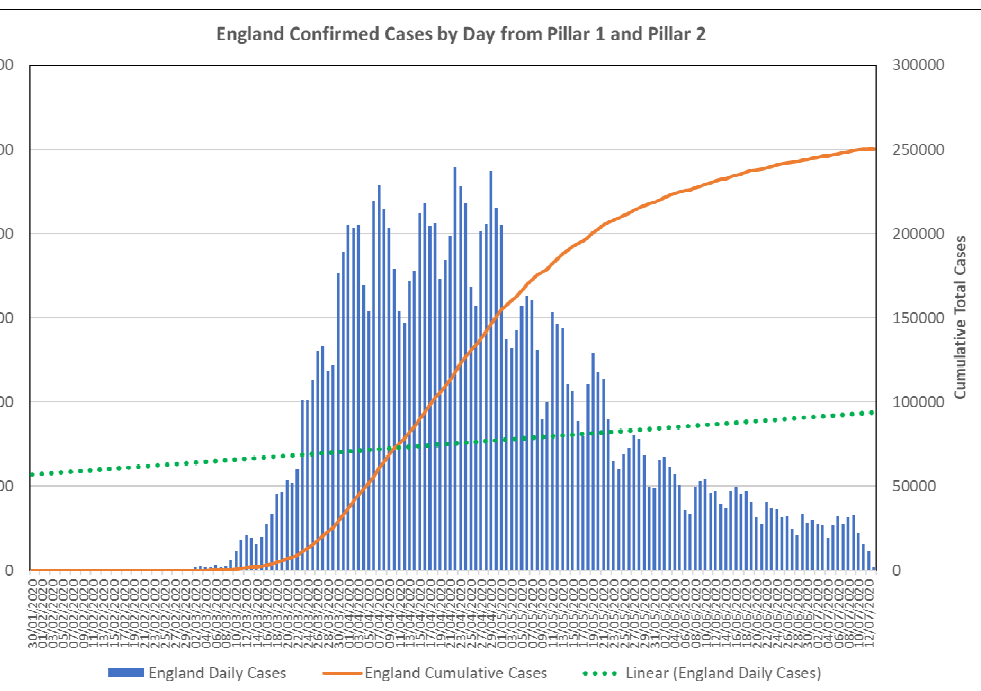


Rachel Robinson– Director of Public Health, Shropshire Council

Sue Lloyd – Public Health Consultant, Shropshire Council

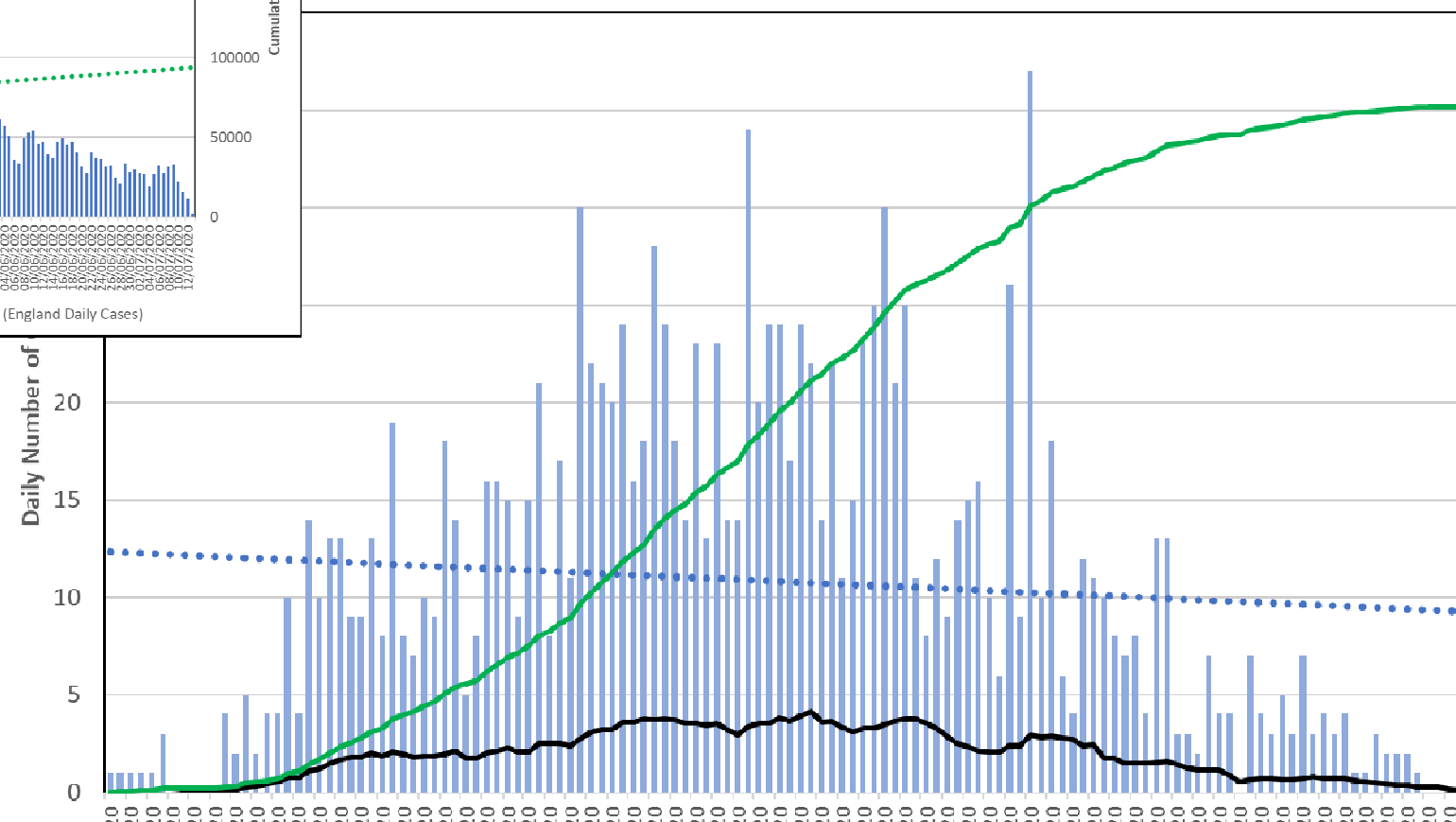
Cllr Dean Carroll – Cabinet Member for Adult Social Care, Public Health & Climate Change

140 Days...

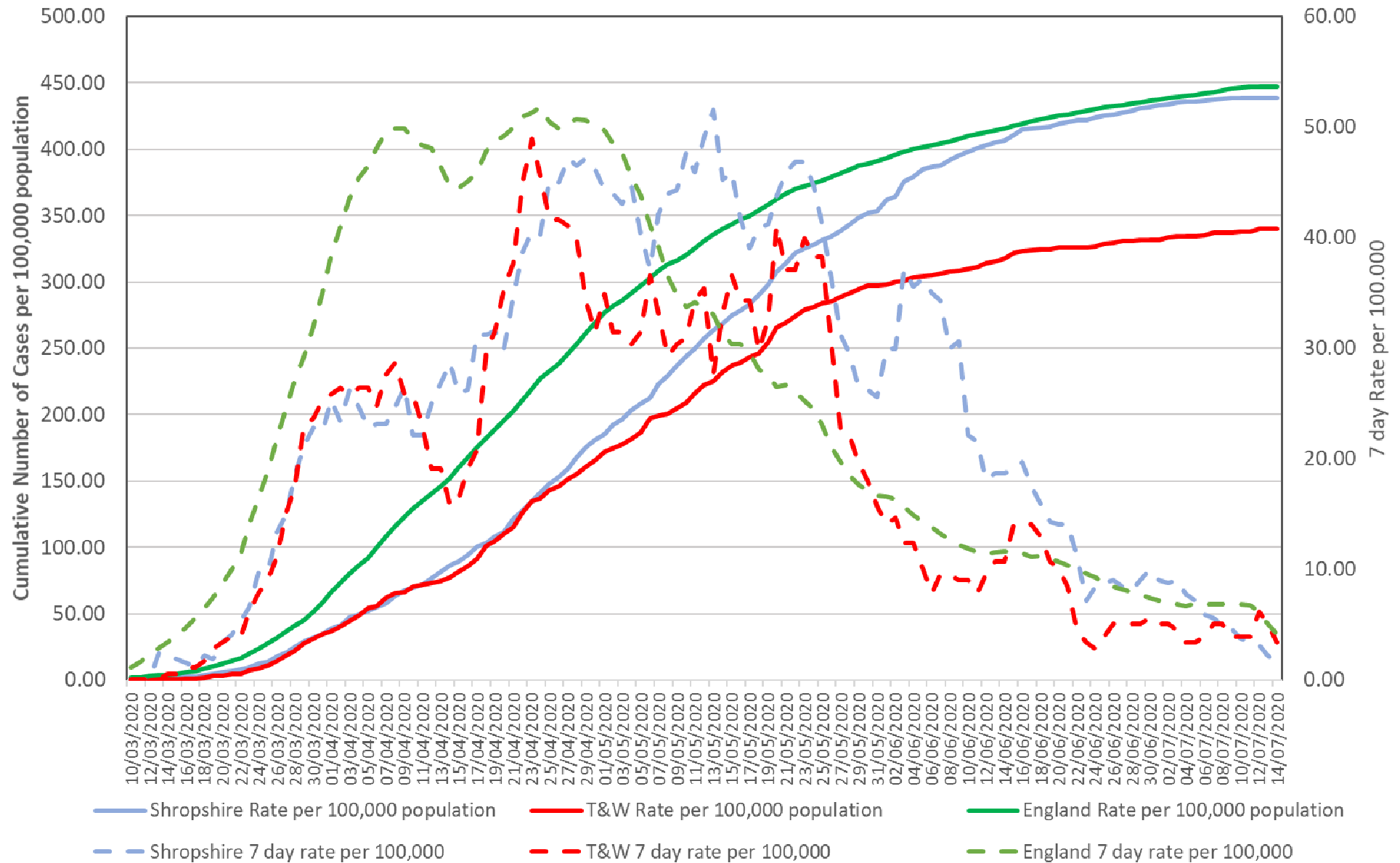


# Cases England and Shropshire

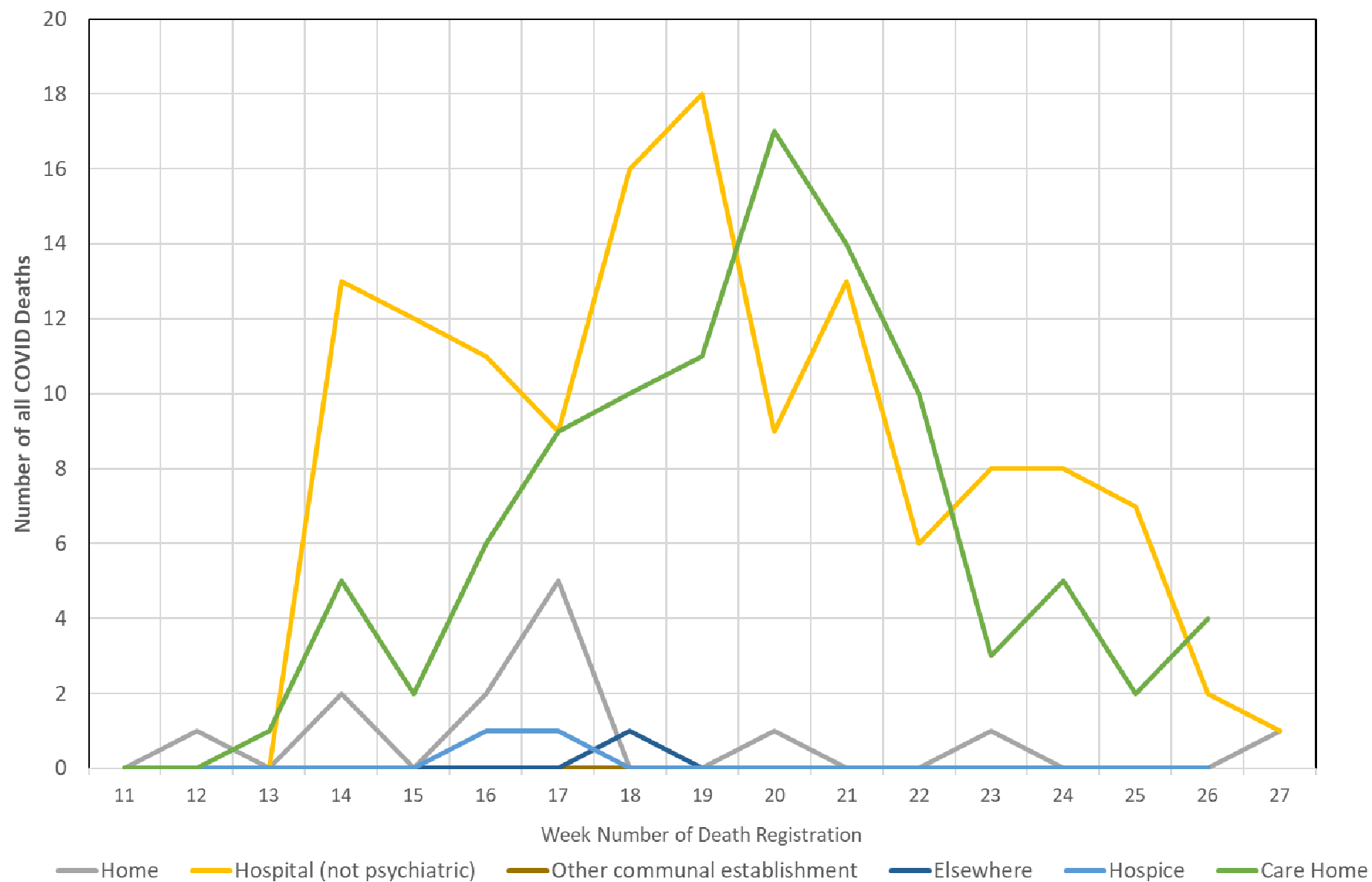
Shropshire Total of Confirmed Cases by Day Pillar 1 and Pillar 2



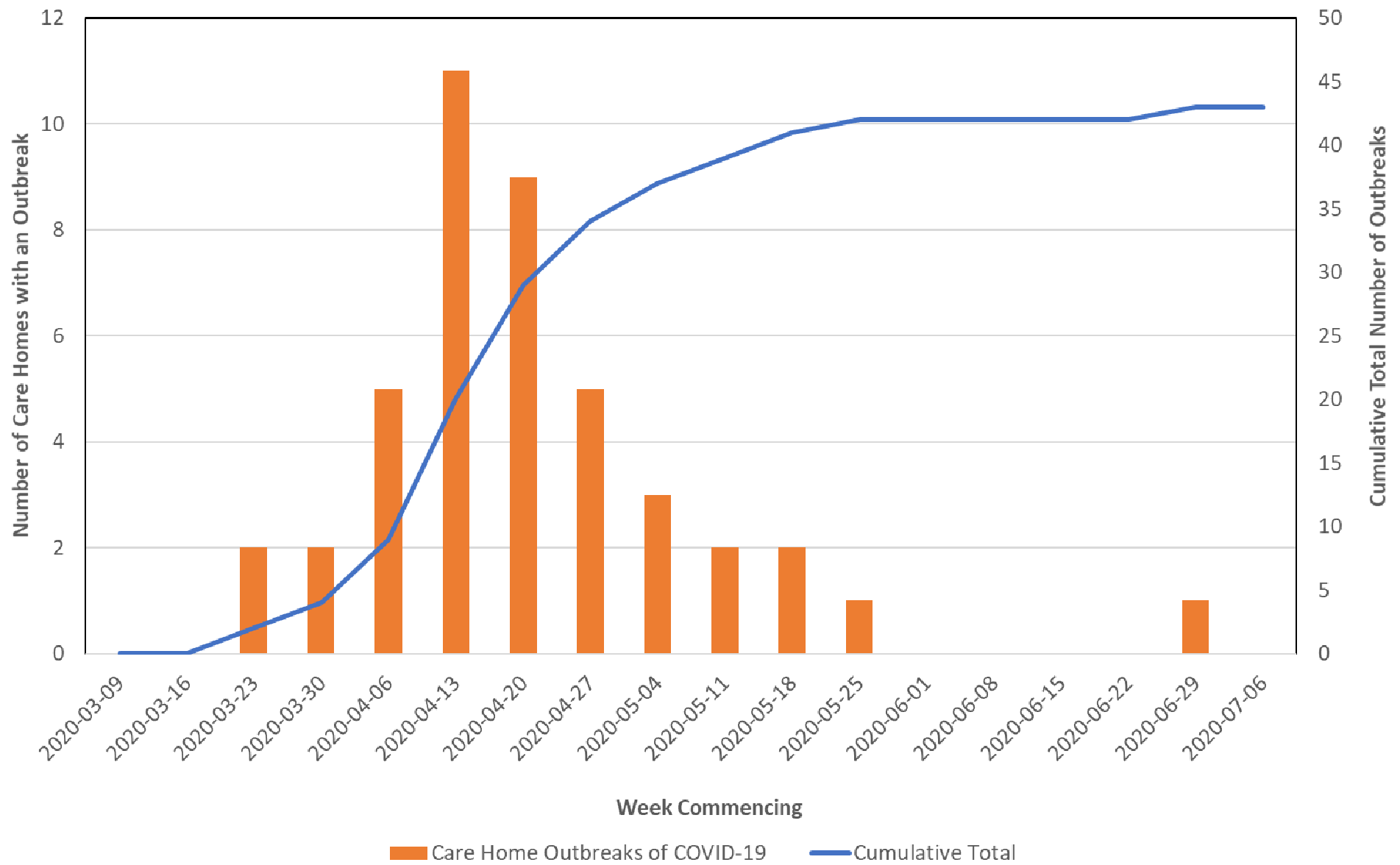
Shropshire and Telford & Wrekin Cases Rate per 100,000 Population Pillar 1 and Pillar 2



ONS - Shropshire Provisional Weekly Deaths where COVID-19 mentioned on Death Certificate by Site



Public Health England - Shropshire Care Home Outbreaks



# Key Messages and reflections

- Epidemic Curve/Profile of cases in Shropshire is different; delayed, flatter and longer
- Overall picture currently is an improved one; slow downward trend
- No one person has remained untouched, collaboration and response
- But ongoing circulation - we will get local outbreaks
- Preparation of second peak

Numbers of cases diagnosed in Shropshire and deaths with COVID-19 on the certificate, have reduced since a peak in April and May, This is currently our best indicator of the **community** pandemic

**Hospital admissions** are also reducing.

Furthermore, we can see the epidemic curve of **care home** outbreaks is now clearly showing decline.

We are however seeing an increased number of outbreaks in **workplace** settings.

# Vulnerable People: Needs in Shropshire

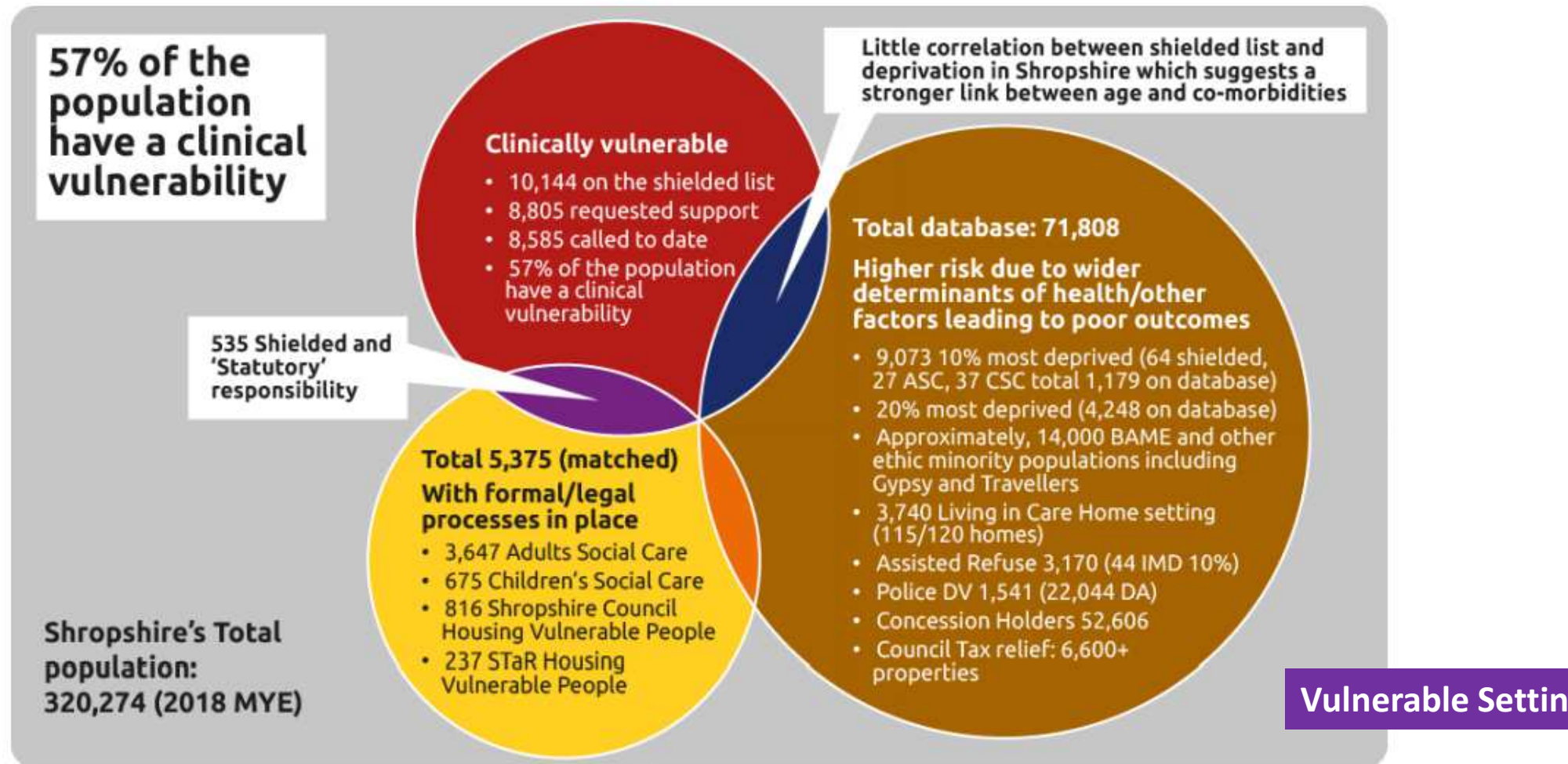


Figure 2: COVID-19 Estimated Vulnerability and Needs in Shropshire



# COVID Challenges – Economic and Social

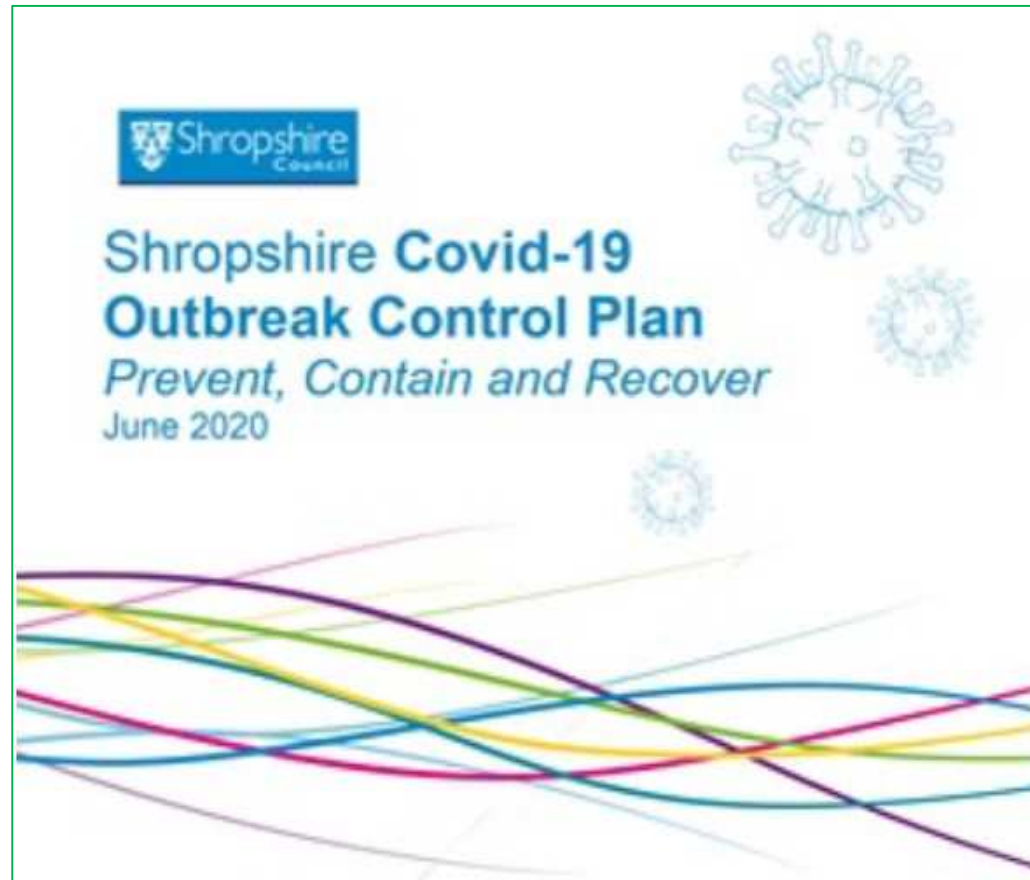
Rural areas have been hit harder by unemployment post COVID. Claims have already risen in Shropshire. Change April 19 to April 20 is by 109.4% (DWP:2020) *Shropshire in upper half of those areas worst affected*

37% of firms reported cash flow problems and 24% of firms intend on making some redundancies

Universal Credit Claims in Shropshire rose from 10,249 in March to 19,210 in May (DWP: 2020)

Economic support measures in place VCSO Grant support, £2m Care Sector support

Social Impacts: Communities, social infrastructure, health, mental health, domestic abuse, young people



Rachel Robinson– Director of Public Health, Shropshire Council

Sue Lloyd – Public Health Consultant, Shropshire Council

Cllr Dean Carroll – Cabinet Member for Adult Social Care, Public Health & Climate Change

# Background

In late May 2020 the Department of Health & Social Care announced that [Local Outbreak Control Plans](#), would be a key component in the HM Government's COVID-19 recovery strategy.

In line with the establishment of the national [NHS Test and Trace programme](#) and the [Joint Biosecurity Centre](#), local authorities **[and systems]** should play a significant role in the identification and management of infection, using local knowledge, expertise and coordination to improve the speed of response alongside Public Health England's (PHE) regional health protection teams.

Shropshire's Outbreak Plan was published last week  
[https://www.shropshire.gov.uk/local\\_outbreak\\_plan](https://www.shropshire.gov.uk/local_outbreak_plan)

*Prevent Spread, Identify and Manage, Local, **Build on Existing**, Change over time*

# Outbreak Control Plan Contents

Shropshire and COVID-19, Aims and Objectives of the plan, Priorities (below), Challenges and an Action Plan.

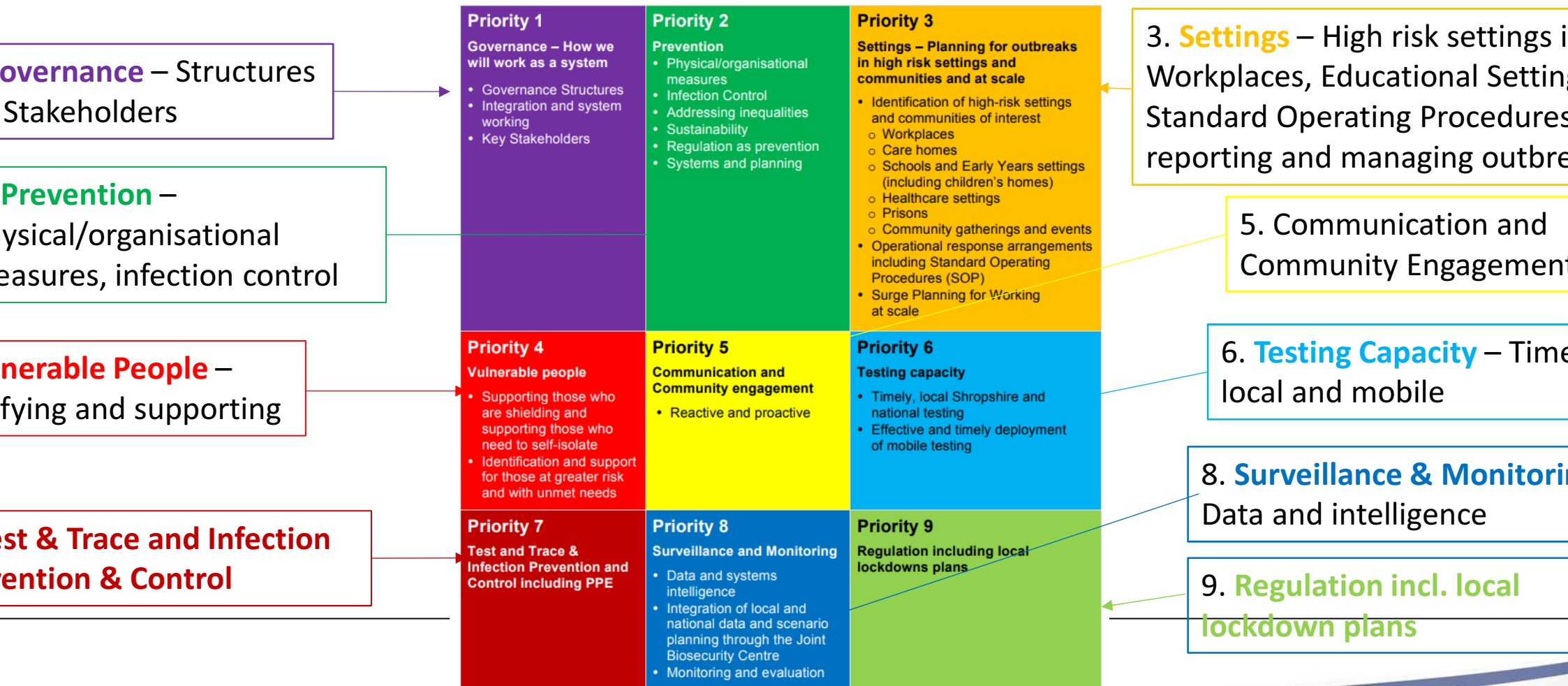


Figure 6 – Specific priorities of Local Outbreak Plan

# Work to date: Builds on Existing – Live Document

- Preventative
  - Settings: Care homes, Business: Town Centres and higher risk, Schools/Unions
  - Restoration of services – “COVID-19 safe”
  - Communities
  - Communication and Engagement
- Contain
  - Outbreak and situation response: Operating Procedures
  - Testing – expansion localising
  - PPE, Infection Control
- Governance – structures
- Surveillance, mapping of communities

# Moving forward: Delivering, developing the plan and planning

- Next steps – action plan - regulations, data, preparing for sector
- Current situation in Shropshire is improving but we continue to monitor closely
- Measures in place sufficient at this time
- All parts of the system have their parts to play in delivering this plan:
  - NHS and care sector, Local business, Communities other organisation, Public – Social distancing, isolation, test and trace, hand hygiene
- Prepare for second wave – fluctuations, outbreaks expected but:
  - Risk Management of settings (prevention)
  - Resilience in population: –improved health: flu, vaccinations, health checks etc
  - Strengthen capacity and capability
  - Rest
  - PPE and testing sites ready
  - Increase community engagement
  - Early detection – test and trace
  - Sharing Comms and messages – variation in messages for different groups